

## PROPERTY - COMMERCIAL

### C12 - HAPPO CABINS

<b>Location</b>	Hakuba
<b>Address</b>	Happo One
<b>Built</b>	1990
<b>Land</b>	Approx 640 sqm
<b>Building</b>	43 m2 each
<b>Construction</b>	Concrete foundation/timber frame
<b>Bedrooms</b>	2
<b>Bathrooms</b>	2
<b>Toilets</b>	2
<b>Hakuba Station</b>	5 minutes drive to Hakuba Station
<b>Access</b>	Closest Ski Resort: Happo One (250m)
<b>Price</b>	¥27,000,000
<b>Ref No.</b>	C12



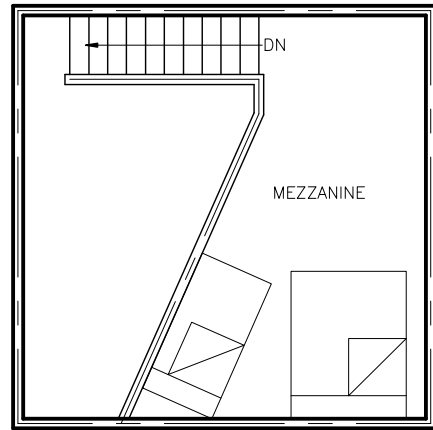
#### Notes

Email: [info@hakubarealestate.com](mailto:info@hakubarealestate.com)

Website: [www.hakubarealestate.com](http://www.hakubarealestate.com)

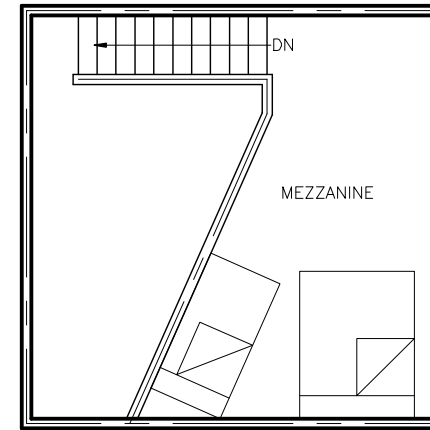
T399-9211, Nagano-ken Kita Azumigun Hakuba

Mura Oaza, Kamishiro 27436-7, Japan



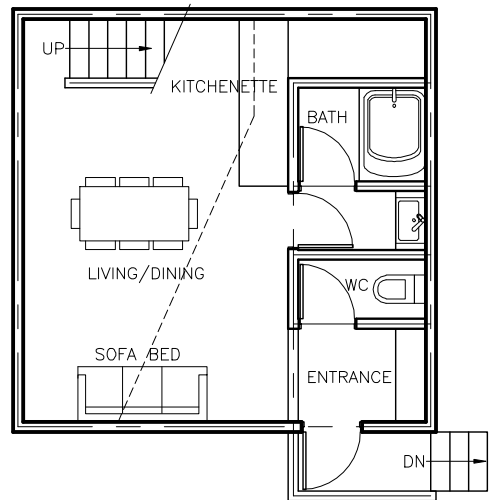
CABIN MIDORI

2F PLAN	15.0m <sup>2</sup>	1:100
---------	--------------------	-------



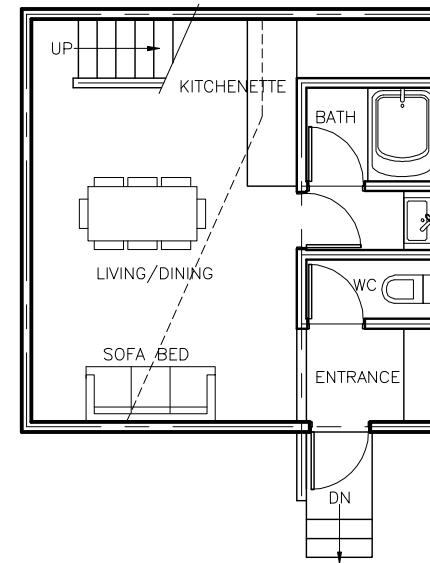
CABIN CHAI

2F PLAN	15.0m <sup>2</sup>	1:100
---------	--------------------	-------



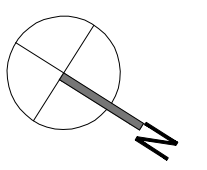
CABIN MIDORI

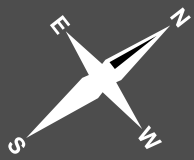
1F PLAN	28.4m <sup>2</sup>	1:100
---------	--------------------	-------



CABIN CHAI

1F PLAN	28.4m <sup>2</sup>	1:100
---------	--------------------	-------





**HAKUBA  
HAPPO-ONE  
SKI AREA**

**HAKUBA  
IWATAKE  
SKI AREA**

**HAKUBA 47  
SKI AREA**

**HAKUBA  
GORYU  
SKI AREA**

**MINEKATA  
SKI AREA**

MINAMI-  
KAMISHIRO  
STATION

KAMISHIRO  
STATION

IIMORI  
STATION

HAKUBA  
STATION

SHINANO  
MORIE  
STATION

TO ITOIGAWA

AOKI  
LAKE

TO TOYOSHINA / OMACHI / MATSUMOTO

TO NAGANO CITY

TO KINASA

